

THE NEIGHBOURHOOD MESSENGER

NEWSLETTER OF THE ADOLPHUSTOWN-FREDERICKSBURGH HERITAGE SOCIETY

Issue Number 25

November 2021

Travellers

While the allure of travel may be on the minds of many of us as we contemplate our post-pandemic lives, the journeys of a "traveller" of the late 1800s and the first few decades of the 1900s held little allure. A traveller was a peddler or door-to-door salesman who traversed the countryside selling goods of all kinds. Travellers' wares were in direct competition to those obtainable by catalogue and were just another way in which rural households depended on home delivery.

Our Society

Members of the Adolphustown-Fredericksburgh Heritage Society have a common desire to deepen our knowledge of the history of our community. In researching and capturing aspects of our past, we seek to preserve, promote, and share our rich local heritage.

Our Executive

President:	Angela Cronk
Vice President:	Frank Abbey
Secretary:	Marg MacDermaid
Treasurer:	Jane Lovell
Webmaster:	Susan Wright
Book Directors:	Joan Reynolds Elizabeth Vandenberg
Communications Director:	Jane Lovell

Our Meetings

The Society meets on the third Wednesday of the month 5-8 times a year at the South Fredericksburgh Hall at 6:30p.m. Check for the next meeting on our website. All welcome!!

Our Website

<http://www.sfredheritage.on.ca/>

Our Facebook Group



Contact Us

If you have questions or suggestions regarding any aspect of the Society, including *The Neighbourhood Messenger*, please contact :

- Angela Cronk, President (373-8888) angelacronk@gmail.com

The [April 2021 issue](#) of the *Neighbourhood Messenger* focused on the role the catalogue played in early home delivery. In this issue we continue our nod to catalogue shopping with selections from the 1917 *Eaton's Fall & Winter Catalogue*.

A Glimpse of the Past



Courtesy of Ida Hudson

Delivery van and driver for the Napanee franchise of Trent Valley Bakeries, then in operation with Doyle's Bakery of Kingston, and making deliveries in South Fredericksburgh.

1964

The Neighbourhood Messenger is an electronic newsletter distributed to members of the Adolphustown-Fredericksburgh Heritage Society.

Membership to the Society is free. In addition to ensured e-mail delivery of the newsletter, Society membership entitles those interested in our local heritage to be kept informed of, and participate in, all aspects of Society activities.

Anyone can become a member by clicking [HERE](#).

If you are not currently an AFHS member, please consider becoming one!

Two Pounds of Coffee

Jane Lovell



Nearly a decade ago a neighbour presented me with a rusty old coffee can he'd found in the basement of his small cottage on Young's Point. The tattered label proclaimed "2 POUNDS OF PURE COFFEE * FAMOUS FOR ITS PURITY STRENGTH AND FLAVOR". I was intrigued to find that the coffee had been packaged and sold by the *Daly Tea Company* of Napanee. The notion of a local tea company was fascinating — what I discovered when I started digging was an engaging tale of an enterprise that operated in the area for over a century under the stewardship of a single family. This is what I found:

Denis Daly was a cotton manufacturer in Dublin Ireland when the introduction of mechanized looms forced his business into bankruptcy. In 1840 and 1841 he and his wife and some of their 10 children emigrated to Canada. The family, including four sons (Edward, Charles, Denis and George), first settled in Kingston, where Denis Sr. established himself in business. Some years later, the family rented a

farm in Sophiasburgh at Cole's Wharf on the High Shore Road where they grew produce for the Kingston market. On the return trip from market, they transported groceries and dry goods, including teas, to sell to neighbouring farmers and others in the surrounding community. Eventually they narrowed the focus of their business exclusively to the importing, blending, and distribution of teas, establishing the *Daly Tea Company* in 1854.

Green tea from Ceylon and several varieties of black tea from India were imported via Montreal, arriving in Napanee in 40-, 60-, and 576-pound cartons. The teas were blended to suit water found in various neighbourhoods and were sold locally in ¼, ½, and 1 pound packages. Thirty-pound cartons could be purchased at local grocers. At some time in the 1900s or 1910s, imported Chase and Sanborn coffee was offered alongside their tea blends. While the *Daly Tea Company* also packaged and sold its own brand of coffee, the time frame and duration of the sale of house brand coffee is unclear.



Denis Sr. died in 1855. By 1871 sons Edward and Denis Daly had established an importing business in Napanee. The census of that year lists brothers Edward, Denis, and Charles as "farmers and traders", suggesting that they continued to farm while engaged in "importing". From 1889-1895, *E. Daly and Company Teas* also appears in local business directories.



Durham Review
December 16, 1920

The London Operation: Around 1890 Edward Daly moved to London, Ontario, where he continued to run *E. Daly and Company Teas*. The company was renamed *The F. Daley Tea Company* when Edward's son Frederick took over the operation, and coexisted for a time with *Daly Grange Teas*, formed when Frederick went into business with George Grange. *Daly Grange Teas* operated in London until it finally passed out of the family's control in 1967. The business continued under a series of mergers and acquisitions until it was ultimately absorbed into *Nestlé Canada* in 1984.

The Napanee Operation: Brother Denis remained in Napanee and by 1897, only *Denis Daly Teas* is listed in the business directories for Napanee. *Denis Daly Teas* continued to be listed until 1906. From 1908, the company was known as the *Daly Tea Company*, and continued under Denis Daly until his death in 1915.

During Denis' tenure at the helm, the sons of his brother George were taken into the business, and the company was later purchased by brothers Herbert, William Arthur, and John Geale Daly.

At the time of his death in 1943, William Arthur was president of the *Daly Tea Company*. His brother Herbert's son George subsequently served as president, followed by George's son William, who was to be the last president of the company. It is unclear whether George's elder son Morris also served as president, but he was involved in some capacity with the company, being listed as "tea merchant" at the time of his marriage at 21 in 1924.



Photos: L&A County Muesum & Archives

Daly Tea Company Office, Napanee (N-00707) & Daly Tea Company wagon on Dundas St., Napanee (N-00708)

1921

Competition from mass-marketed pre-packaged standardized tea blends, coupled with the economic trials of the Depression and the disruption in shipping during the Second World War, conspired over time to reduce profitability of the family business. The *Daly Tea Company* of Napanee ceased to exist in 1961.

The Western Operation: With offices and warehouses in both Napanee and London in the 1890s, Denis and Edward Daly had firmly established their tea business in southern Ontario. The 1934 Toronto Directory lists an office in Toronto, and in the 1930s, 1940s, and 1950s newspapers from such

places as Bowmanville, Barrie, Alexandria (north of Cornwall), Orono, Colborne, Arnprior, Stouffville, Kingston, Brooklin (north of Oshawa), and Porcupine (east of Timmins), had mention of Daly Tea. By as early as 1909, though, it is evident that the reach of Daly Tea had extended west into the prairie provinces. While managers were dispatched from the Napanee and London operations to Brandon, Manitoba, Saskatoon, and Edmonton, it is unclear if offices were established there or whether the

business was simply distribution. It is also unclear how long the *Daly Tea Company* had a presence west of Ontario, but likely at least into the 1930s.

Resigned His Position.

John B. Allison has resigned his position as collector of customs at Napanee to accept a position with the Daly Tea Co., in Western Canada. James Thompson, Newburgh receives the appointment of collector of customs at Napanee.

Daily British Whig
March 3, 1913

Frederick Mont Mills left, last week, for Edmonton, to drive a motor for the Daly Tea company.

Porcupine Advance, Timmins
March 27, 1927

Daly's Good Tea and Coffee

QUALITY and Value is being maintained, notwithstanding the vicissitudes of a rising market; and our Teas and Coffees are so good that better value cannot be obtained in Canada.

**DALY'S BLACK TEA DALY'S JAPAN TEA
DALY'S COFFEE**

Coffee put up in 2-lb cans only.

Shipped charges prepaid to any place in Canada.

For over three-quarters of a century we have satisfied our customers with the best tea the market afforded and we are now in a better position to do so than ever.

THE LARGEST TEA DISTRIBUTORS IN CANADA

THE DALY TEA COMPANY, LIMITED

TEA AND COFFEE IMPORTERS

HEAD OFFICE

NAPANEE, ONT.

Buying Offices—Shidzouka, Japan; Kobe, Japan; Colombo, Ceylon

Napanee Beaver
June 11, 1920

While no references to Daly Tea have been found for British Columbia or provinces east of Ontario, the 1943 obituary for William Arthur Daly appearing in a local paper stated that the Daly Tea Company "has become one of the best known importers and distributors of tea in Canada, with business activities extending throughout the western provinces, Ontario and Quebec."

Orange Pekoe Blend Always

Daly's Good Tea

The most popular tea in Canada for over 75 years. Expert testers and blenders insure the high standard for quality, strength and flavour. For sale by A. P. Dooley, Nick Blahey and F. Feldman, Timmins, Ont. F. Feldman & Co., South Porcupine, Ont.

Try a pound and be convinced you never tasted better

THE DALY TEA CO., LTD.—Head Office: Napanee, Ont.

Glengarry News
August 22, 1941

The Travellers: The Daly Tea business model relied heavily on salesmen peddling tea and coffee to rural residents.

From 1904 to 1912, William Arthur Daly, who later became president of the *Daly Tea Company*, is listed as "traveller" in his children's baptismal records, suggesting that the company continued to make rounds through Lennox & Addington county.

In 1909 the Salada Tea Company targeted the tea peddlers with the following advertisement in the *Perth Courier*:

The finest leaves of Ceylon tea plantations...
Packed in lead packets
To preserve the delicious flavour and aroma.
Sold only by grocers
Never by peddlers or in bulk.

Despite the negative image competitors tried to paint of peddlers, those who sold wares door-to-door were much anticipated visitors. Local newspapers listed when the “agents” would be or had been in the neighbourhood.

Messrs. J. E. Anderson, Consecon, and A. Spence, Cobden, are travelling this district in the interests of the Daly Tea Co., Napanee.

Daily British Whig
February 17, 1926

Mr Ernest Mc Ewen, Cornwall, agent Daly Tea, was in this section the early part of the week.

Daily British Whig
April 24, 1913

The coming of the “Daly Tea Man” obviously left an impression, and very close to home too.

In *Voices Volume 2*, Judy Smith recalls:

We had other salesmen who came door-to-door as well—the tea man, the butcher, the grocery man, the bread man, Watkins and the Fuller Brush man.

In *Remembering the Christian Neighbourhood* The Old Order Changeth. 1969: Marion Hough wrote:

A similar service was given by a butcher on weekly trips and Daly's Tea from Napanee about once a year.

From the *Amherst Island Beacon*: April 16, 1970 - Volume 1 Issue 1

The writer of the letter [Mr. N.A. (Bus) Daly of Vancouver, B.C.] will be remembered by many older Islanders, who recall the more prosperous days of “The Daly Tea Co. of Napanee,” when this company was known throughout Ontario as one of the largest tea importing and blending firms then in existence. Their outlets and sales of tea were handled principally by “peddling” from door to door, as well as wholesaling to retail businesses. Horses and wagons were used in earlier times but with the advent of the automobile the change was made to trucks. It is in connection with the transportation of their first truck to the Island that Mr. Daly recalls the experience that they encountered. Before the advent of ferry service to and from Amherst Island, if you owned other than a car upon which the top could be lowered and the windshield removed or turned down it was necessary to transport such vehicle via the “lighter,” a flat scow owned by the late John Tugwell and towed by a motor launch. (Cars, which could have the top lowered etc., were able to be accommodated on the Steamer Brockville, a passenger boat plying the “Bay Route”, making calls at Emerald, Bath and Stella. The necessity of lowering the top etc. was to allow the vehicle to enter the low narrow gangway, intended for only passengers and freight trucks.) The above mentioned lighter was flat bottom, reputedly hard to tow and susceptible to upsets particularly when loaded with a shifting cargo such as pigs or cattle, for which purpose Mr. Tugwell had it constructed. The particular experience recounted by Mr. Daly was in 1924, when they loaded the Daly truck, heavily laden with tea, on the lighter at Millhaven, a storm was coming up when they set out with the tow being made by the late Hugh Glenn (Les and Stirling’s father) with his launch the “Ethel”, in order to beat the storm the motor was operating “full speed” and when over a mile from Stella, a connecting rod went through the block of the engine and lighter and launch drifted down the channel toward the foot of the Island. Fortunately the plight was spotted by Vere Howard, who came to the rescue with his motor launch and towed them safely to shore, just as the storm broke.

And from further afield:

From *Anecdotes and Updates Virden Centennial 1982* (Virden is west of Brandon Manitoba):

The Daly Tea man used to drive around the Countryside with a team of mules and a wagon and sell tea door to door. It came in boxes lined with lead to keep the tea fresh and was sold in 20- and 25-pound caddies. Sometimes, I believe, it was even sold in 30-pound boxes. My father always bought 30 pounds of black tea and one pound of green tea when the Daly man came around. Coffee was rare in those days. Everyone drank tea.

From *The Chronicles of Crandall*, 1971:

Edna Laura (Warren) Frame was born in 1895 in Plamerston District, north of Verden Manitoba. She recalls:

The Daly Tea Company of, I think Oshawa, Ontario, had a wagon on the road which sold us our year's supply of tea. If Mr. Daly accompanied the wagon, he usually spent the night with us and we listened all ears to our elders' tales of Ontario, which seemed to us must be the Garden of Eden.

From the 2009 Spring Edition of the *Goulbourn News* of the Goulbourn Township Historical Society. (Gouldbourne is near Ottawa) Transcription of an interview conducted July & August 2008:

We never drank coffee until about the time of World War II. It was all tea and you did not buy it at the store. There was a company out of Montreal called the Daly Tea Company. The tea salesman, Mr. Errott, came around once a year and took orders from all the farmers for the next year. It came in a wooden box called a tea chest, with metal bands around it. That was the source of our tea. We had a dark room upstairs and it would be stored up there. It would all be loose tea. There were some of those old tea boxes around for years. It was natural wood and black script printing.

Few now remember the role the *Daly Tea Company* played in the lives of rural residents and of those who worked for the company. The once prominent Canada-wide business endured for over a hundred years under the guidance of four generations of the Daly family. The influence of the both the family and the company can be seen today in the Daly Cup, donated in 1909 by Herbert Daly and presented annually at the Napanee Golf Course, and in the company office and warehouse, now known as *The Daly Tea Company Building*, at the corner of Dundas and East Streets in Napanee.



Glengarry News
June 30, 1944

Daily British Whig
September 18, 1918

Then and Now

Steve Medd



2021

Photo: Steve Medd

49 Graham St. East, Napanee Part Lot 3, North Side Graham St. Napanee Town Plot

I've been trying to unravel the mystery behind my house after recently discovering old hand-me-down photos of it. Here's what I know.

The Daly family of Napanee were Irish immigrants to Canada in the 1840s who became tea wholesaler merchants selling blended black and green teas from India, Ceylon and Japan. In 1871 two sons Edward and Denis Jr. opened the Daly Tea Company importing business in Napanee. Their offices were located at the corner of John St. and Market Square.

In 1877 Edward bought the Victorian house at the corner of John St. and Graham St. East on a property where he would build a large tea storage and blending warehouse barn and stable. Tea was shipped to Napanee by rail two blocks away at the end of John St. Horse-drawn wagons would haul the tea packages into the barn where it would be blended and repackaged for distribution around the region. The barn appears to have been used for this purpose until 1921 when the company moved its offices and warehouse to larger premises on Dundas St. East.



Photo: Bruce & Carrie Medd
circa 1952

In 1953 my grandfather, Bruce Medd, bought the barn to turn into an upstairs-downstairs duplex. It remained a duplex until my wife Kathy and I bought it in 2005 to turn into a single family home, the year my grandfather passed away.

Nothing is now visible to indicate the house was once a tea blending shed.



Photo: Bruce & Carrie Medd
circa 1952

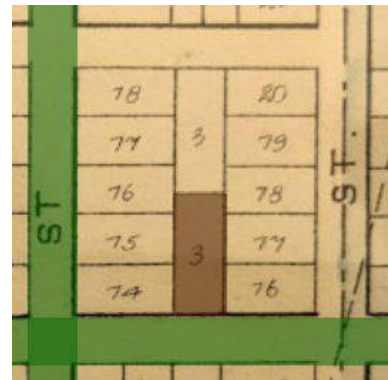
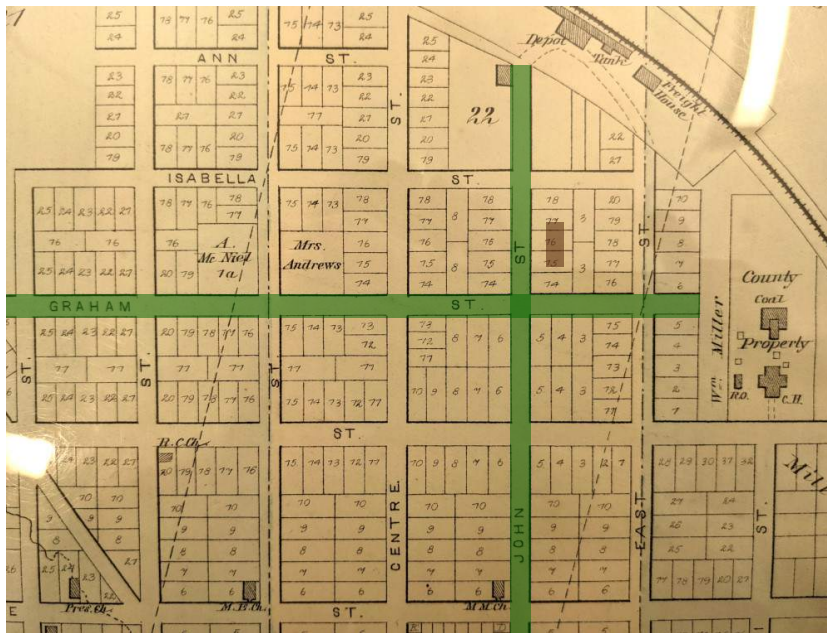
And More Then and Now

Jane Lovell

This is the second time that **Then and Now** has featured a property in Napanee. The Wales Block on Dundas at Adelphi appearing in the [April 2017 issue](#) of the *Neighbourhood Messenger* housed the Russell Bros. Grocery, run by the Russell family from South Fredericksburgh, and much frequented by the rural residents south of town.

The connection between 49 Graham St. East and our townships is more tenuous. It is the old blending barn that provides the tie, through the *Daly Tea Company* and through the Daly family itself. Of course Daly tea and coffee found its way into the pantries of many homes in Adolphustown and Fredericksburgh, including that two pound tin of coffee found on Young's Point. Some of the tea and coffee was likely purchased in town, but much of it was delivered by the travelling salesmen of the *Daly Tea Company*. Social and recreational pursuits brought various members of the Daly family and principals of the *Daly Tea Company* to Camp Le Nid near Adolphustown and to Glen Island during the first few decades of the 1900s.

And so back to the tea blending barn and warehouse: The old barn is one thing, the lot on which it stood is another.



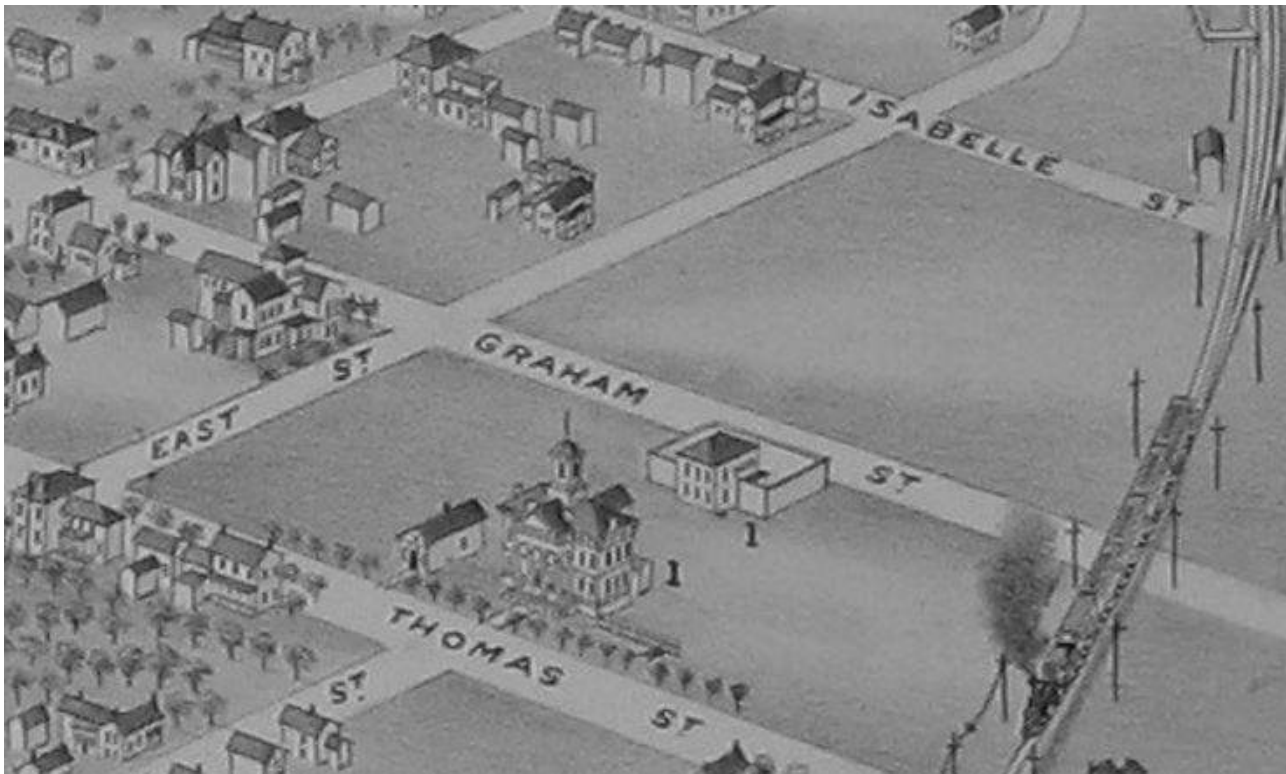
Lots north of Bridge Street between Robert and Adelphi Streets & Detail of Lot 3 North Side of Graham Street, East of John Street

Meacham's 1878 Illustrated Historical Atlas of the counties of Frontenac, Lennox and Addington

What is now 49 Graham St. East is the south half of Lot 3, north side of Graham St. East in the Napanee Town Plot.

The town of Napanee stands on land originally granted to Richard Cartwright in 1805. In 1831, parts of Lots 22 & 23 in the first Concession of Richmond Township were set out as town lots, a quarter and a fifth of an acre each in size. The quarter-acre lots ran north of Dundas and extended only as far as the south side of Thomas. By the time the 1860 *Walling's* map had been produced, the town lots had been extended north one more street to the south side of Graham. It wasn't until 1873 that the town plot was officially extended north to the railway tracks at Elizabeth, including Lot 3 on the north side of Graham.

While not yet part of the official town plan, the south half of Lot 3 makes its appearance in 1869 when it was sold by the Cartwright family to Thomas Samuel Carman, the proprietor and editor of the *Napanee Weekly Express*. A year earlier Carman had bought the adjacent lot on the corner of John and Graham Streets. It is unclear when Carman built the red brick Victorian house now gracing 225 John Street, but by 1877 the house and the amalgamated lots along John and Graham Streets were sold to Edward Daly.



The 1874 *Bird's Eye View of Napanee* clearly shows the house at the corner of John and Graham (top left, above). Interestingly there also appears to be a building on Lot 3. However, the building depicted on the map has the opposite orientation from the Daly Tea blending barn, so was likely an earlier structure.

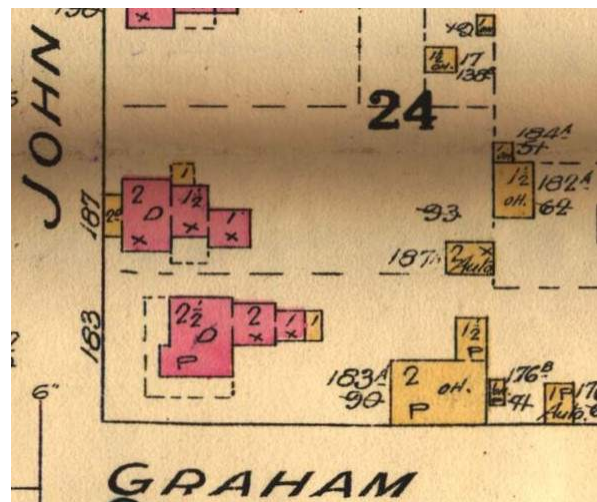
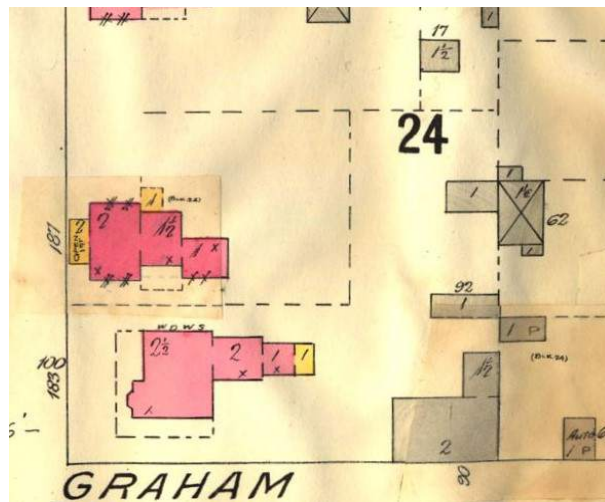
Despite moving to London around 1890 to run the *E. Daly Tea Company* there, Edward Daly retained the Napanee lots he bought from Carman in 1877. In 1914 John Geale Daly (Edward's nephew and an owner, along with his brothers, of the *Daly Tea Company* of Napanee) bought the house just to the north on John Street and the north half of Lot 3. This had the effect of creating a compound on Lot 3, owned by two branches of the Daly family, on which the storage and blending of tea was conducted.

On Edward's death, ownership of his lots passed to his daughter and then on to two of his granddaughters. It was the last of these granddaughters who severed Lot 3 from the house on John Street and sold it to Bruce Medd in 1953.

The entanglement of the Daly family in Lot 3 was not yet over, however. Several adjustments to the property lines followed, including an agreement for access to a well on the the Medd property. The agreement was revoked in 1966, on the death of the last Daly to own the John Street house, Edward's great-granddaughter, ending an 89-year, four-generation interest of the Daly family in Lot 3.

It is unknown when the building used as the blending barn for the *Daly Tea Company* was built on Lot 3. The structure on the site in the 1874 map is clearly not the same building captured in the 1952 photo of the barn. By 1917 a two-storey wooden building with a 1½-storey addition to the rear was one of three outbuildings on the property. This can be seen on the 1917 *Fire Insurance Map for Napanee*,

which shows both north and south halves of Lot 3 as part of a single property associated with the house on the corner of John and Graham Streets. The interesting thing about this map is the patch that has been applied over the barn and other outbuildings at the bottom right of the detail below. The base map was produced in 1904 and updated, as required, by applying patches showing changed features. The fact that the barn is only partially patched indicates that it was on the property in 1904. By the time the 1931 *Fire Insurance Map* was produced, only the south half of Lot 3 is shown as part of lot on the corner of John and Graham.



Source: L&A County Museum & Archives

Details from the 1917 and 1931 Fire Insurance Maps for Napanee

For a period of time, Edward Daly owned all the property along the north side of Graham Street between John and East Streets. In 1881, he purchased the lot on the corner of East and Graham Streets. It is possible that this was when the barn was built on Lot 3, perhaps with other outbuildings on Lot 3 and the East Street lot.

The lot on the corner of East and Graham Streets was sold by Edward's executors in 1910. In April of that year it was announced in the *Daily British Whig* that *The Daly Tea Company*, originally occupying premises at John Street and Market Square, was moving to a store on Dundas Street. This is corroborated by the 1917 *Fire Insurance Map* that marks the building at 68 Dundas as being the warehouse of the *Daly Tea Company*. In 1921 the *Daly Tea Company* bought the building.

It appears that the barn on Lot 3 on Graham Street continued to be used by Daly Teas after the office and warehouse were moved to Dundas Street. Anecdotal evidence has both coffee and black pepper being sold out of the barn into the 1950s.

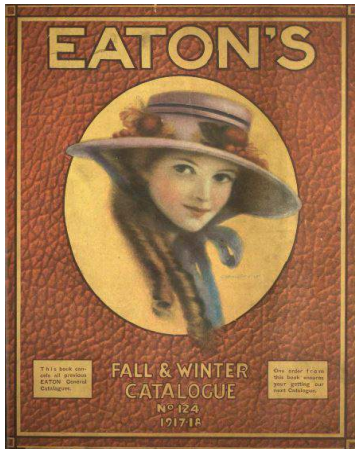
So, it is still a bit of a mystery as to the true beginnings of the Medd's home. While indisputably it was originally the blending barn for the *Daly Tea Company*, the date it was built is still unknown. It can be said with certainty, however, that the barn was put up sometime between 1874 and 1904, and most likely in the 1880s.



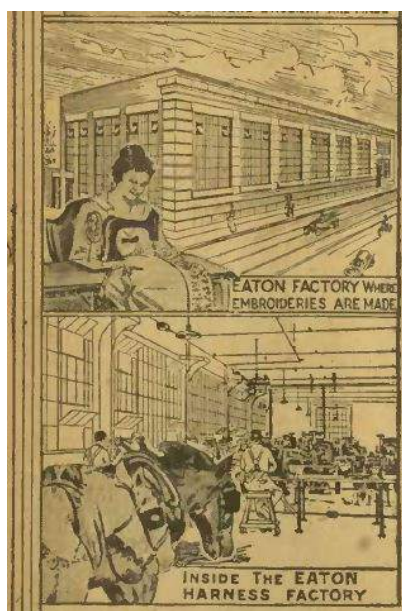
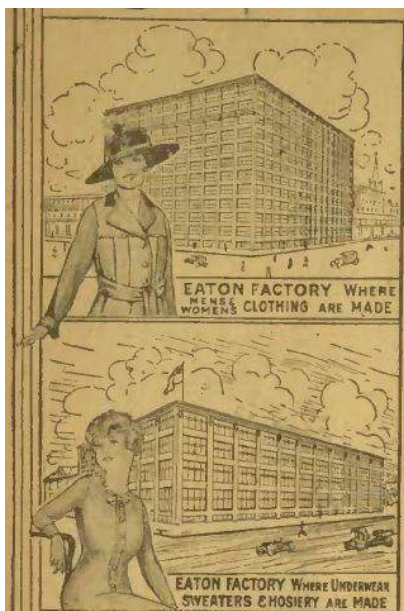
L&A County Museum & Archives
Rare sign advertising Daly Tea to drink,
rather than to purchase as tea leaves for
home consumption

Clippings

The **Clippings** column is dedicated once again to the 1917 *Eaton's Catalogue*, this time the *Fall & Winter* issue. Published three years into the First World War, the 1917 *Spring & Summer* issue catalogue acknowledged the war with little more than restrictions on firearm acquisition. It is surprising, then, to see just a few months later, such a rapid growth of patriotic influences in goods on offer. There was also a new push to promote Canadian-made articles, many of which were manufactured in Eaton's factories.



The patriotic symbol most commonly chosen was the flag which appears twice on the promotion of Canadian made goods, to the right. This flag is the Canadian Red Ensign, a naval flag and the one troops carried into battle during World War One. It was not, however, Canada's national flag. The Royal Union Flag (the Union Jack) remained the official



flag of Canada until it was replaced in 1965 by Maple Leaf flag we fly today. During the First World War, the Red Ensign bore the heraldic arms of Canada's founding provinces — Ontario, Quebec, New Brunswick, and Nova Scotia. The design was not standard, however, and other flourishes, such as wreaths, were often added, as can be seen in some of the following clippings.

In addition to the same wide range of goods available in the *Spring & Summer* catalogue to supply the entire household and farm, the *Fall & Winter* issue came with the added allure of Christmas toys and winter sporting equipment.

ALLIES' JELLY POWDER

39-124
Raspberry
Orange
Strawberry
Lemon
Pineapple
Cherry
Vanilla

4 PACKAGES 25c
Each package makes a Pint.



ALLIES' PIN

This pin of hard baked enamel, in flag colors is in great demand, has a strong pin fastener.

26-895.
Each. **25c**



BADGE COLLECTING IS NOW VERY POPULAR

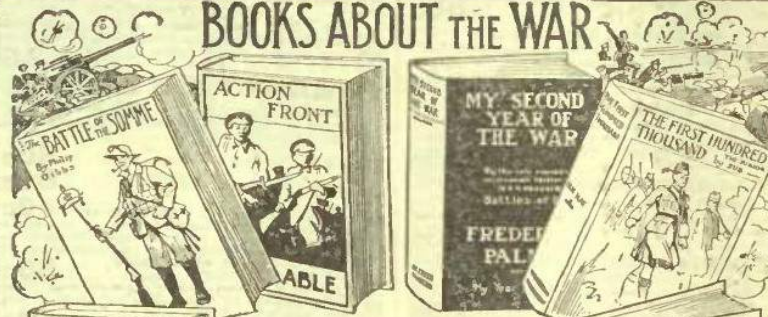
Are you collecting the badges of the various battalions and other units? Our prices are 15c, 35c, 50c and 75c, according to size and the amount of workmanship.

Write for list, also contains prices on other soldier's supplies, we have the largest stock and variety in Canada.

26-894. Badge of the Fighting 3rd. Copper finish. **15c**



BOOKS ABOUT THE WAR



34-R20. Canada in Flanders. Volume I. Price. 25c
34-R21. Canada in Flanders. Volume II. Price. 35c
34-R22. The Battle of the Somme, by Philip Gibbs. Price. 1.25
34-R23. The British Campaign in France and Flanders, by A. Conan Doyle. Price. 1.50
34-R24. Gallipoli, by John Macdonald. Price. 75c
34-R25. The Retreat from Mons, by Major A. Corbett-Smith. Price. 1.10
34-R26. Italy, France and Britain at War, by H. G. Wells. Price. 1.50
34-R36. The Soul of the Bishop, by H. G. Wells. Price. 1.25
34-R35. Bullets and Bullets, by Capt. Bruce Bairnsfather. Cloth binding. 1.25

34-R27. A Student in Arms, by Donald Hankey. Price. 1.25
By **BOYD CABLE**
34-R28. Grapes of Wrath. Price. 1.25
34-R29. Action Front. Price. 1.25
34-R30. Between the Lions. Price. 1.25

By **FREDERICK PALMER**
34-R31. My Year of The Great War. 1.35
34-R32. My Second Year of the War. 1.35
By **IAN HAY**
34-R33. The First Hundred Thousand. 90c
34-R34. Carry On. (Ready about Sept. 1st). Price. 90c

28 - 405. Hanging Pin Cushion, Japanese Silk, comes in Union Jack, Canadian flag, and a combination flag of the Allies... **10c**



275 BIG DICK MACHINE GUN



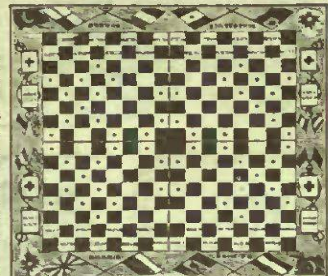
18-143. Big Dick Machine Gun. The very latest in toy machine guns, will fire shots as quickly as you care to turn the handle, mounted on iron stand. Length of barrel 17 1/2 ins. Lots of wood ammunition goes with each. **2.75**

TOY DRUM
18-148. Toy Drum, with good...



FIGHTING WITH THE ALLIES

26-264. Fighting with the Allies. One of the latest and one of the best war games. Has a board 24 x 14 of superior finish, brightly lithographed. This game is of fun and excitement for two or four players. Full directions each. **50c**



BUTTON LOCKET
Made of great coat button.
26-896. Single Opening.
Each. **25c**
26-897. Double Opening.
Each. **35c**

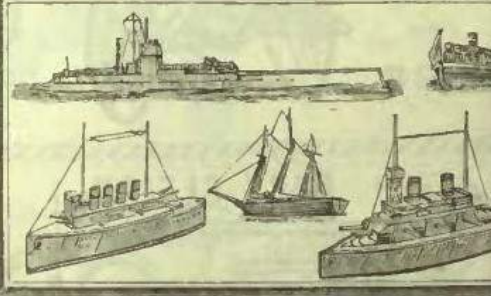


50c

18-192. The Popular Red Cross Nurse, strong composition head, painted hair, stuffed body, jointed at hips and shoulders, Length 12 1/2 ins. Price. **50c**



CONSTRUCTION MODELS



18-261. Made of cardboard. Each sheet, which are different parts of warships, have to cut out and fitted together. Several models from the tiny pinnace to the modern battleship can be made up from one of these sets. Price..... **34**

WOOL BUNTING AND PRINTED COTTON FLAGS



Printed Cotton Flags, mounted on sticks, either Canadian Ensign or Union Jack.

60-647.	8 x 10 inches.	Each.....	4c
60-648.	10 x 15 inches.	Each.....	6c
60-649.	15 x 20 inches.	Each.....	10c
60-650.	18 x 25 inches.	Each.....	13c
60-651.	20 x 28 inches.	Each.....	20c
60-652.	22 x 36 inches.	Each.....	25c

WOOL BUNTING FLAGS

THE RED CROSS GIRLS

Make second and third choice.




A New Series of Books for Girls on the European War.

34-J90. The Red Cross Girls in the British Trenches.
34-J91. The Red Cross Girls on the French Firing Line.
34-J92. The Red Cross Girls in Belgium.
34-J93. The Red Cross Girls With The Russian Army.
Cloth Bound. Each..... **35c**

THE LATEST BOOKS FOR BOYS ON THE GREAT WAR

EACH 35c



A SERIES OF REMARKABLE STORIES OF THE ADVENTURES OF TWO BOYS IN THE GREAT EUROPEAN WAR. Make second and third choice.

34-L25. Our Young Aero-plane Scouts at Verdun.
34-L26. Our Young Aero-plane Scouts in the Balkans.
34-L27. Our Young Aero-plane Scouts in England.
34-L28. Our Young Aero-plane Scouts in Italy.
34-L29. Our Young Aero-plane Scouts in France and Belgium.
34-L30. Our Young Aero-plane Scouts in Russia.
34-L12. The Boy Allies at Jutland.
34-L20. The Boy Allies Under the Sea.
34-L13. The Boy Allies in The Baltic.
34-L17. The Boy Allies On The North Sea Patrol.
34-L21. The Boy Allies Under Two Flags.
34-L22. The Boy Allies With The Flying Squadron.
34-L23. The Boy Allies With The Terror of the Seas.
34-L10. The Boy Allies At Verdun.
34-L18. The Boy Allies On The Somme.
34-L14. The Boy Allies In Great Foul.
34-L15. The Boy Allies In The Balkan Campaign.
34-L11. The Boy Allies At Liege.
34-L19. The Boy Allies On The Firing Line.
34-L24. The Boy Allies With The Cossacks.
34-L16. The Boy Allies In The Trenches.
34-L31. The Boy Scouts Afoot in France.
34-L32. The Boy Scouts On War Trails in Belgium.
34-L33. The Boy Scouts On Belgian Battlefields.
34-L34. The Boy Scouts With The Allies in France.
Cloth Bound. Each..... **35c**

FIREPROOF CHRISTMAS BELLS

These Bells are fireproof, and are made of bright red tissue. They add greatly to the charm of the Christmas festivities.

34-416. 9-inch bell. 10c each or 3 for 25c
34-417. 6-inch bell. 5c each or 6 for 25c



GLASS ORNAMENTS



18-232. Christmas Tree Ornaments. 12 in a box. A brilliant decoration. Assorted colors. Price..... **25c**

TINSEL CONES



18-182. Tinsel Cones. A splendid interior decoration, with lots of sparkle to it. 6 cones assorted in a box. Price... **29c**

ELECTRIC SPARKLERS



18-188. Electric Sparklers. Harmless illuminations for all festive occasions. 10 Sparklers to box. 12 boxes for..... **50c**

ARTIFICIAL SNOW



18-132. Artificial Snow. Put up in large packet. A very popular decoration. Per pkg..... **10c**

CHRISTMAS WISHES



SPECIAL 35c BOX

34-401. These Christmas Cards have exquisite designs, and are tied with ribbon or cord. Each card has an envelope to fit it. No two alike. 10 cards and 10 envelopes. Price, per box..... **35c**

34-405. New Year's Cards, same assortment as above, with New Year's greetings. Price..... **35c**

HOCKEY SKATES



18-853. Clamp Skate, made of cast-steel, reinforced with brackets at heel, ball of foot and toe. Clamps at heel and ball of foot. Can be adjusted by key to fit any ordinary sized boot. Sizes 8 to 11½ inches. Per pair..... **79c**

18-851. Climax Skate, an excellent skate for hockey or pleasure. Strongly bracketed. Nickel-plated blade. Double end style. A skate that is sure to give satisfaction. Sizes 9 to 11½ inches. Per pair..... **2.00**

18-850. Starr Model Hockey Tube Skate, one of the best produced, made from the finest quality steel. Glass hard blades, nickel-plated finish. Sizes 9 to 11½ inches. Per pair..... **4.75**

18-852. Athlete, a popular skate with both men and boys. Very serviceable. A first-class article at a low price. Nickel-plated steel blade, well bracketed. Popular double end style. Divided foot plate. Sizes 7 to 11½ inches. Per pair..... **1.25**

18-856. Scotia, one of the most popular medium priced skates. Welded tempered and well finished blade nickel-plated, and fully bracketed. Double end style, with puck stop. Size 10 to 11½ ins. Per pair..... **3.00**

How to Measure for Skates

State length of shoe in inches. Do not order skates by number. We often receive orders for skates like the following: "Send me a pair of skates, No. 9." We do not know whether it is for a child's No. 9 boot, a man's No. 9 boot or a 9-inch shoe. We must have the length of shoe in inches. The lengths in which we list the various skates shown on this page do not mean lengths of runners, but lengths of the top plates on which the shoe rests. By measuring according to these instructions you will get a correct fit.

HOCKEY SWEATERS

SIZES - 34 to 42

Our Hockey Sweaters are all-wool, medium weight. Heavy roll collar. Trimmings on collar, yoke, cuffs and skirt.

18-514. Red body with White trimmings. Sizes 34 to 42. Each... **3.25**

18-515. Royal Blue body with White trimmings. Sizes 34 to 42. Each... **3.25**


18-516. Black body with Orange trimmings. Sizes 34 to 42. Each... **3.25**

18-517. Cardinal body with Black trimmings. Sizes 34 to 42. Each... **3.25**

18-549. Any two colored body, with trimmings made to order. Price..... **4.50**

Sketch of all Special Sweaters must accompany order, and we shall require three weeks to fill special orders.


3²⁵



18-864. Extra Quality Rubber Pucks, best league, regulation size. Each..... **35c**

18-865. Regulation Size Hockey Pucks. Each..... **20c**

18-866. Juvenile Hockey Pucks. Each..... **10c**



HIGH-GRADE HOCKEY STICKS

Special attention is given to our Hockey Sticks to have them manufactured to meet the requirements of all hockey players. Special care taken with club orders.

JUMBO
19-868. Jumbo, for the little fellows—the coming players. About 35 inches long. Price..... **10c**

DREAD-NOUGHT
19-869. Boys' Hockey Stick of second-growth rock elm, a stick made to stand rough usage. 42 inches long. Price..... **15c**

REGULATION
19-870. Regulation Stick. This is a special stick. Has smooth, straight handle. Good shape blade. Made from selected straight grain second-growth rock elm. Regulation size. Price..... **25c**

THE CRACK SHOT
19-871. Crack Shot, made from second-growth rock elm. Well shaped, deep blade. A great favorite with all hockey players. Price..... **35c**

THE ICE KING
19-872. Ice King, made from second-growth rock elm, specially selected stock. Straight, close grain. Deep, well-shaped blade. A stick that is sure to give satisfaction to the most particular hockey player. Price..... **50c**



Early Schools in the Area, Part 4 - The School Fair

Susan Wright

The school fair pamphlets included in this article were collected by Mary Loyst-Magee (1918-1989), and donated to the AFHS by Linda Tibbutt. Mary attended S.S. #4 South Fredericksburgh, Parma, and took an active part in the school fairs.



Photo: AFHS

S.S. # 4 South Fredericksburgh - Parma School circa 1925

Mary Loyst is second from left in the middle row.

Back: Vera White, Grace Loyst, Ellen Gallagher, Edith Fitchett, Margaret Keyes (teacher), Verna Arnold, Meeda Arnold, Edith Box, Ruby Brooks

Middle: Billy Ruttan, Mary Loyst, Freda Brooks, Ruth Campbell, Irene Ruttan, Clara McCormick, Mildred Loyst, Victor Brooks

Front: Wallace Ruttan, Merton Powell, Wilkie Bruce, Gordon Campbell, Durwood Garrison, Hugh Bruce, Ted Fitchett, Don Bruce, Arthur Loyst, Harold Loyst

One of the most promising features of school life in Canada is the school fair which has recently achieved such popularity.

From early spring, when the children receive material from the Department of Agriculture for planting, until the product is exhibited at the school fair in the fall and the competition for prizes is over, the race is on. Desire for a prize stimulates active interest. The boy watches his plot. He reads all he can about his particular crop. He compares his potatoes or whatever it may be, with the main crop on the farm. He questions dad. Everybody on the farm becomes more or less enthused and when the time for awarding the prizes arrives all come to see what the young people have been doing.

Pupils of the schools taking part in a school fair, besides growing such crops as potatoes, corn, mangels, grain and plants of various kinds to exhibit, they also compete at fair with essays, collections of weed, weed seeds, insects, etc., and specimens of their cooking and serving. They become interested in all things pertaining to the farm.

Daily British Whig December 10, 1913

Some clippings about School Fairs in the area. Each community would hold a fair in the fall for schools in the area. South Fredericksburgh and south Adolphustown combined efforts, with the fair normally being held at Sillsville. The entire community would come out to attend the festivities. Local women's groups would assist with set-up, lunches and prizes.

FAIRS FOR CHILDREN.

Ontario Has Scheme to Encourage Agriculture.

Toronto, April 10.—The department of agriculture for Ontario has decided to encourage the study of agricultural subjects by the children of the public schools by establishing a system of school fairs to be held each year, independent of all the other fairs. A children's day will be set apart when the youthful competitors may come together with their seeds, vegetables and poultry. Under the present system where school children enter exhibits at the various fall fairs these are invariably given second place and relegated to some back corner of a building. Then again, with no many other lines of exhibits to divert attention children's exhibits are not given as much prominence as they deserve. The new department is in charge of Prof. McCready, of Guelph College.

Daily British Whig
April 12, 1912

Dorland School Fair.

Napanee Express.

The school fair held at Dorland on October, 10th, was a magnificent success. The attendance was about 800. The pupils of the schools at Adolphustown, Dorland, U.E.L., The Pines, Conway, Parma, Sandhurst and Sillsville attended, and all the exhibits were made by these school children.

The main tent was filled with samples of oats, barley, potatoes, corn and roots that equalled any fair held in the county. The bread, cookies, preserves and aprons made and shown by the girls were an eye-opener. The collections of weeds, weed seeds, and insects were also very fine.

A wonderful showing of white Wyandottes was made. One hundred and sixty-six birds were exhibited. These chickens were all hatched and reared from eggs supplied to the school children last spring by the Department of Agriculture.

The live stock exhibit was good; fifteen colts lined up before the judge, and twenty calves, mostly Holsteins.

The Adolphustown Women's Institute supplied refreshments in their tent on the grounds.

Daily British Whig
October 18, 1912

N. Fredericksburgh School Fair.

A large and successful Children's Rural School Fair was held at Anderson's church on Sept. 28th. The attendance was upwards of one thousand people, who enjoyed the day thoroughly. Many were heard to remark that they enjoyed this fair better than the regular fall fairs. The display inside the tent was simply grand. The mangels, flint, corn and apples were the finest yet exhibited this year. The poultry display was extra large, over 300 white Wyandotte chickens being shown. The entry of colts and calves was large.

Daily British Whig
October 3, 1914

1916 School Fairs

Napanee, July 10.—Eleven Township School Fairs will be held in Lennox and Addington County this coming September and October. The dates are:—

- Sept. 6.—Ernesttown (Odessa.)
- Sept. 7.—Amherst Island (Stella.)
- Sept. 8.—Adolphustown (Sandhurst.)
- Sept. 8.—South Fredericksburgh (Sandhurst.)
- Sept. 18.—Newburgh (Newburgh.)
- Sept. 22.—Richmond (Selby.)
- Sept. 25.—North Fredericksburgh (Anderson's church.)
- Sept. 27.—Camden (Centreville.)
- Sept. 28.—Sheffield (Tamworth.)
- Oct. 10.—Kaladar (Flinton.)
- Oct. 11.—Denbigh (Denbigh.)

Daily British Whig
July 10, 1916

Rural School Fairs.

Napanee, Sept. 11.—Eleven rural school fairs will be held in Lennox and Addington county this year. Over \$800 will be offered in prizes, being contributed by the county council and the township councils. The feature of each school fair this year will be the Pig Club exhibit. The dates of fairs are:

- Camden, at Centreville, Sept. 23rd.
- Sheffield, at Tamworth, Sept. 24th.
- Richmond, at Selby, Sept. 25th.
- Ernesttown, at Odessa, Sept. 26th.
- Newburgh, at Newburgh, Sept. 27th.
- N. Fredericksburgh, at Anderson's Church, Sept. 30th.
- S. Fredericksburgh, Sillsville, Oct. 1st.
- Adolphustown, Dorland, Oct. 2nd.
- Amherst Island, Stella, Oct. 3rd.
- Denbigh, Denbigh, Oct. 7th.
- Kaladar, Flinton, Oct. 8th.

Daily British Whig
September 21, 1918

Conway Women's Institute

The members discussed the serving of a lunch at the rural school fair at Sillsville. It was decided to have a booth for the Conway Institute and sell well filled lunch boxes to all those present who were looking out for something good to eat, and also to serve lemonade. In the matter of prizes it must not be forgotten that the Conway Women's Institute are giving the following prizes at this school fair:

- 1.—\$3 for the best writing.
 - 2.—\$3 for best speech, public speaking contest to last not longer than five minutes.
 - 3.—\$3 for the best sight reading.
- These prizes include pupils of all ages and in all classes but only in those schools in which Conway Women's Institute have members.

Daily British Whig
August 5, 1924

SILLSVILLE LADIES' AID

Moved by Mrs. P. Young and seconded by Mrs. Martin Hough, we have three tents at our School Fair.

Moved by Mrs. Duncan Hough and seconded by Mrs. Herb White, we appoint the following to help erect the tents and do other work to be done on the grounds: Mr. Will Hough, Mr. Rod Sharpe, Mr. Harold Hough, Mr. P. Young, Mr. R. Merritt, Master Albert Lloyd, Mr. Norman Galt. Arrangements were made for our School Fair, which is to be held on September 15th and the Ladies' Aid of Sillsville will serve lunch, which will consist of ham sandwich, pie, hot-dogs, cake, candy, ice cream, lemonade and tea.

Our next Ladies' Aid will meet at Mrs. Martin Hough's and as each member is to bring a plant to sell, the roll call will be answered to by something about flowers.

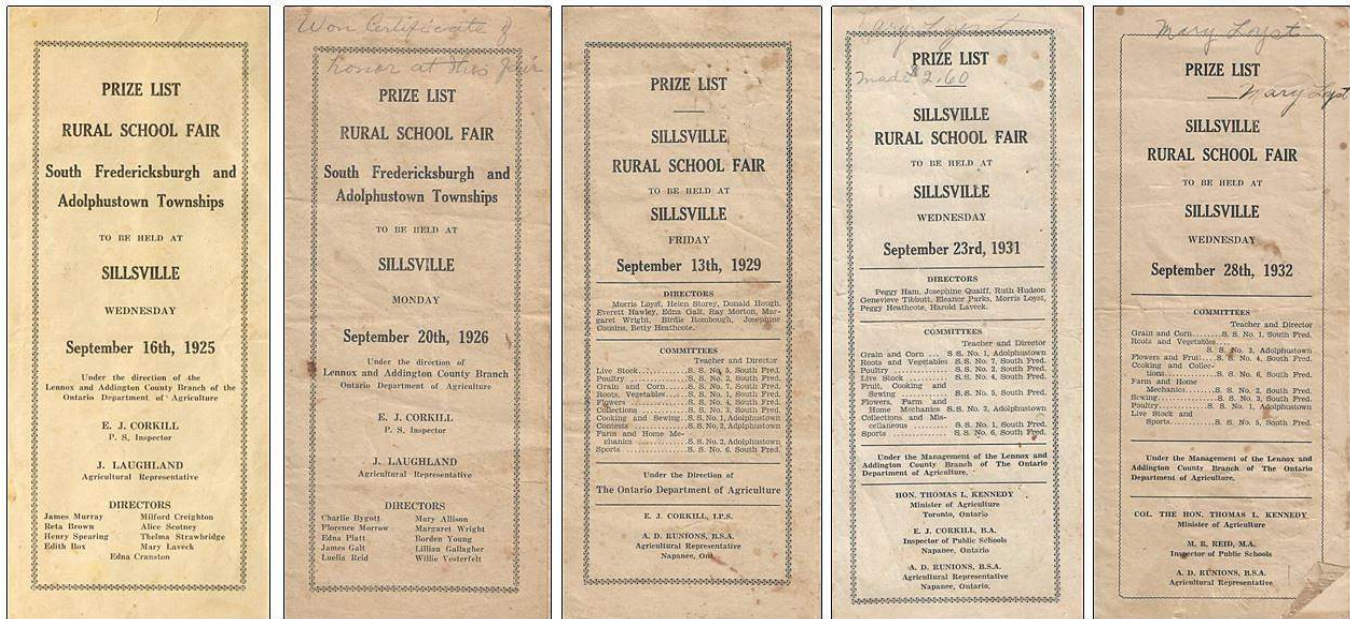
Sillsville School Fair will be held at Sillsville, September 15th. Everybody welcome.

Daily British Whig
September 17, 1930



Photo: AFHS

School Fair at the old South Fredericksburgh Township Hall
Undated Photo



Pamphlets for the South Fredericksburgh-Adolphustown School Fairs at Sillsville

Note that the 'Directors' are school students, and individual schools would form a 'committee' to take charge of the various categories.

The 1928 Sillsville School Fair

<p>PRIZE LIST</p> <p>SILLSVILLE</p> <p>RURAL SCHOOL FAIR</p> <p>TO BE HELD AT</p> <p>SILLSVILLE</p> <p>FRIDAY</p> <p>September 14th, 1928</p> <p>Under the direction of Lennox and Addington County Branch Ontario Department of Agriculture</p> <p>E. J. CORKILL Public School Inspector Napanee</p> <p>J. LAUGHLAND Agricultural Representative Napanee</p> <p><i>Won Certificate of Honor at this fair</i></p>	<p>PRIZE LIST</p> <p>GRAIN AND CORN</p> <p>Class</p> <ol style="list-style-type: none"> Oats, O.A.C. No. 144; 1 quart. Oats, O.A.C. No. 144; Sheaf 3 inches in diameter. Wheat, Marquis; 1 quart. Wheat, Marquis; Sheaf 3 inches in diameter. Barley, O.A.C. No. 21; 1 quart. Barley, O.A.C. No. 21; Sheaf 3 inches in diameter. Field Corn, Golden Glow; 3 stalks with ears. Sweet Corn, Golden Bantam; 6 ears. <p>ROOTS AND VEGETABLES</p> <p>Class</p> <ol style="list-style-type: none"> Potatoes, Irish Cobbler; 6. Potatoes, Dooley; 6. Turnips, Perfect Model; 5. Mangels, Giant White Sugar; 5. Beets, Detroit Dark Red; 6. Carrots, Chantenay; 6. Onions, Yellow Globe Danvers; 6. Parsnips, Hollow Crown; 6. <p>FLOWERS</p> <p>(Bouquet of about 12 blooms, arrangement and quality of flowers considered.)</p> <p>Class</p> <ol style="list-style-type: none"> Asters. Sweet Peas. Phlox. Zinnia. Cosmos. African Marigold. Verbena. Calendula. Salpiglossis. French Marigold. Gladiolus; 6 spikes from Home Garden. <p>FRUIT</p> <p>Class</p> <ol style="list-style-type: none"> Apples, Wealthy; 5. Apples, Talman Sweet; 5. Apples, Spy; 5. Collection of Apples; four varieties, three of each. <p>LIVE STOCK</p> <p>Class</p> <ol style="list-style-type: none"> Spring Colt, draft type. Calf, beef type. Calf, dairy type. Spring Lamb. 	<p>POULTRY</p> <p>Class</p> <ol style="list-style-type: none"> Barred Rock Cockerel. Barred Rock Pullet. Pen of Barred Rocks, one cockerel and two pullets. <p>COLLECTIONS</p> <p>Class</p> <ol style="list-style-type: none"> Collection of at least 20 harmful weeds, pressed, mounted and named. Collection of at least 25 kinds of weed seeds in glass bottles, named. Collection of Insects, mounted and named. Collection of hay and pasture crops, small sheaf of each mounted on card and named. <p>MANUAL TRAINING</p> <p>Class</p> <ol style="list-style-type: none"> Bird House. Grit Hopper for Hens. Wooden Mallet, hardwood. <p>COOKING</p> <p>Class</p> <ol style="list-style-type: none"> Bran Muffins; 5. (Pupils 10 and under). Oatmeal Cookies; 5. Apple Pie. Homemade Candy; ½ lb. <p>SEWING</p> <p>Class</p> <ol style="list-style-type: none"> Clothes Pin Apron. Handkerchief, hemstitched. Wash Cloth, blanket-stitch, with monogram. (Pupils 10 and under). Guest Towel, hemstitched, with monogram. <p>WRITING</p> <p>Class</p> <ol style="list-style-type: none"> "The Dandelion". Page 300. 4th Class. "The Shepherd Boy". Page 180. 3rd Class. "Indian Summer". Page 92. 2nd Class. "The Star". Page 30. 1st Class. "The Wind". Page 14. Primer. <p>DRAWING</p> <p>Class</p> <ol style="list-style-type: none"> Map of Canada, showing provinces, capitals, lakes and rivers. 4th Class. Watercolor Poster, advertising School Fair. 3rd Class. Pencil Drawing of Cat. 2nd Class. Crayon Drawing of Pumpkin. 1st Class.
---	--	--

CONTESTS		PROGRAMME		SUGGESTIONS TO EXHIBITORS	
Class	63. Stock Judging Contest.	9.00 to 11.00.	Placing exhibits.	Read your prize list carefully and see that you understand exactly what is required in the different classes.	
64.	Stock Naming Contest.	11.00.	Judging commences.	Sheaves—Have straw full length with large heads. Tie at top, middle, and bottom. Remove loose leaves and trim bottom.	
65.	Vegetable Judging Contest.	12.00.	Lunch.	Grain—Screen your sample or hand pick to remove small grain, broken kernels, weed seeds and dirt.	
66.	Public Speaking Contest, 5-minute address; one pupil from each section. Suggested subjects:—"Value of the School Fair", "A Trip I Have Taken", "Poultry Raising", "Canada".	1.00.	Strathcona Exercises.	Corn—Uniform ears with straight even rows, well filled at tip and butt.	
67.	School Chorus. Each school will sing one verse and chorus of two selections to be made by the teacher, who may conduct but will not sing.	1.30.	School Chorus.	Corn Sheaf—Large stalks with well developed ears.	
68.	Strathcona Exercises. Team of not less than 8 and not more than 12. Eight exercises, 3 times each.	1.45.	Judging Live Stock.	Roots—Select large, smooth, sound, uniform roots.	
		2.00.	Contests.	Beets—Dark coloured, even in size and shape, free from disease, and not over 3 inches in diameter.	
		2.30.	Hall open.	Carrots—Smooth, free from sunburn, medium size.	
		2.45.	Sports.	Onions—Large, well matured specimens, free from thick neck.	
		3.30.	Prize Money Paid.	Potatoes—Uniform in size and shape, not unduly large, free from sunburn, scab, or other disease.	
		4.00.	Exhibits may be removed.	Flowers—Select large fresh blooms. Do not crush. Asters should have full centres.	
RULES AND REGULATIONS		PRIZES		SPORTS	
1. Pupils who have attended school for one month or more in 1928 may compete.				Races for Girls,—	
2. No pupil will be allowed to exhibit more than one crop in classes 1 to 16, and one kind of flowers in classes 17 to 26, but may make entries in all other classes.				50 yard race, 6 years and under.	
3. Only one entry may be made in any class.				50 yard race, 7, 8, and 9 years.	
4. All exhibits in classes 1 to 26 must be the product of seed supplied by the Department of Agriculture.				75 yard race, 10, 11, and 12 years.	
5. Only chickens from eggs distributed may be exhibited.				100 yard race, over 12 years.	
6. Colts and calves must be from the exhibitor's home farm. They should be halter broken.				Jumping race with feet tied.	
7. Parents are urged to advise and encourage children in the preparation of exhibits, but it is strictly against the rules for any child to exhibit an article made by an adult. The teacher or parent must attach to each exhibit of cooking, sewing, and manual training, a certificate on the entry tag or otherwise, stating that the work was done by the exhibitor.				Throwing baseball.	
8. Articles exhibited in any previous year will not be awarded a prize at the 1928 fair.				Potato Race.	
9. Entry tags may be obtained from the teacher or director.				Teachers' Walking Race.	
10. No entry fee will be charged and admission is free to all.				Races for Boys,—	
11. Exhibits must be in place by 11 o'clock.				50 yard race, 6 years and under.	
12. Exhibits are not to be removed until 4 p.m.				50 yard race, 7, 8, and 9 years.	
				75 yard race, 10, 11, and 12 years.	
				100 yard race, over 12 years.	
				Sack Race. Contestants bring sacks.	
				Three-legged race.	
				Relay race, four from each school. Two boys and two girls.	
				Trustee's race.	
				Wheelbarrow race.	

Sillsville School Fair Results for 1928 (from the Napanee Beaver October 31, 1928)

A few notes on the various categories:

Mangels - A large, coarse yellow/reddish-orange beet, grown mainly for livestock feed.

Salpiglossis - An annual flower, also known as 'velvet flower' or 'painted tongue.'

Strathcona Exercises - A series of exercises similar to a military drill.

Grain & Corn

Oats, 1 quart - Betty Heathcote

Oats, sheaf - Betty Heathcote

Wheat, 1 quart - Donald Hough

Wheat, sheaf - Donald Hough, Arthur Whitfield, Stanley --

Field Corn - Ruby Brooks, Clarence Parks, Everett Hawley

Sweet Corn - Daly Baldwin, Joe Reid, Josephine Quaiff, Jeane Hogeboom, Edna Cranston, Elaine Horne

Roots & Vegetables

Potatoes, Irish Cobbler - Jean White, Edna Galt, George Day, Evan Brooks, Willie Tibbutt

Potatoes, Dooley - Victor Brooks, Clara Brown, Dorothy Sills, Fred Punchard, Betty Heathcote, Borden Young

Turnips - Eleanor Reid, Harold Laveck, Everett Hawley, Annie Shelley, Lillian Graham

Mangels - Dave Reid, Betty Heathcote

Beets - Thora Tuckett, Harriet Head, Eleanor Parks, Hazel Walker, Helen Storey, Florence Morrow

Carrots - Irene Ruttan, Mary Loyst, Clara McCormick, Peggy Heathcote, George Day, Mary Gallagher

Onions - Harold Laveck, Arthur Whitfield, Margaret Wright, Florence Tibbutt, Emily Roberts, Kathleen Lloyd

Parsnips - Clarence Parks, B. White, Betty Heathcote, Billie Ruttan

Flowers

Asters - Sydney Strawbridge, Peggy Heathcote, Josephine Cousins, Nellie Gallagher, Kathleen Lloyd, Winnie Fretts

Sweet Peas - Eleanor Reid, Aleta Walker, Gladys Lloyd, Elaine Horne

Phlox - Laura Sills, Peggy Ham, Albert Lloyd, Harriet Head, Bobby White, Arthur Whitfield

Zinnia - Dora Gallagher, Cissy Lewis, Chas. Wellington, Irene Wellington

Cosmos - Clarence Reid, Peggy Heathcote, Helen Laveck, Evelyn Ackerman, Fred Punchard

African Marigold - Geneva Wartman, Marjorie Brooks, Florence Walker, Genevieve Tibbutt, Birdie Rombough

Verbena - Betty Heathcote, J. Quaiff, Patricia Sills

Calendula - Borden Young, H. Walker, Evelyn Reid, Kate Laveck

Salpiglossis - Wallace Hogeboom, Dorothy Sills, Mary Loyst, Harvey Lloyd

French Marigold - Edna Cranston, Gladys Kilgannon, Marion Baldwin, Ada Bruce, Margaret Wright, Florence Morrow

Gladiolus - Jean Craven, Edna Cranston, Evan Brooks

Fruit

Apples, Wealthy - George Day, Winnie Fretts, Ralph Fretts, E. Galt, Mary Loyst

Apples, Talman Sweet - Gladys Kilgannon, Georgina Day, Mary Loyst, Peggy Ham

Apples, Spy - Geneva Wartman, Mary Loyst, Evelyn Roblin, Peggy Ham

Collection of Apples - Bruce Cuthill, Mary Loyst, Gladys Kilgannon, Ruth Campbell, Elaine Horne

Livestock

Calf, Beef Type - Borden Young

Calf, Dairy Type - Edna Cranston, Dave Reid, Leslie Mellow

Spring Lamb - Willie Tibbutt, Borden Young, Genevieve Tibbutt

Poultry

Barred Rock Cockerel - Borden Young, Jeane Hogeboom, Edna Cranston

Barred Rock Pullet - Borden Young, Edna Cranston, Jeane Hogeboom, Mary Loyst

Pen of Barred Rocks - Jeane Hogeboom, Mary Loyst, Leslie Mellow, Edna Cranston, Borden Young

Collections

Collection of Weeds - Hazel Walker, Edna Cranston, Florence Morrow, Lillian Graham, George Day, Dora Gallagher

Collection of Weed Seeds - Jeane Hogeboom, Lillian Graham

Collection of Hay and Pasture Crops - Dora Gallagher, Dave Reid

Manual Training

Bird House - George Day, Arthur Whitfield, Wallace Hogeboom

Grit Hopper for Hens - George Day

Wooden Mallet - George Day

Cooking

Bran Muffins - Evelyn Roblin, Ruth Hudson, Peggy Heathcote, Ada Bruce, Mary Loyst, Elaine Horne

Oatmeal Cookies - Florence Davern, Ruby Brooks

Apple Pie - Eleanor Hudson, Helen Hoare, Betty Heathcote, Eleanor Reid, Helen Storey, Dora Gallagher

Homemade Candy - Elaine Horne, Harriet Head, Clara Brown, Ada Tuckett, Nellie Gallagher

Sewing

Clothes Pin Apron - Jeane Hogeboom, Hazel Walker

Handkerchief - Edna Cranston

Wash Cloth - Mary Loyst, Gladys Kilgannon, Jeane Hogeboom, Ruth Hudson, Evelyn Ackerman, Edna Galt

Guest Towel - Margaret Wright, Florence Morrow, Jeane Hogeboom, Edna Cranston, Gladys Lloyd

Writing

'The Dandelion' - M. Wright, Irene Ruttan, Edith Fitchett, Laura Sills, Betty Heathcote, Bernice Laveck

'The Shepherd Boy' - Betty Allison, Genevieve Tibbutt, Clara Brown, Gladys Lloyd, George Day, George Scott

'Indian Summer' - Harold Laveck, Wayne Bygott, Helen Trumpour, Victor Brooks, Kathleen Lloyd, Laura Punchard

'The Star' - Evelyn Ackerman, Francis Allison, Margaret Allen, Geneva Wartman, Edna Ruttan, Percy Wellington

'The Wind' - Doris Wilson, Doris Baldwin, Ruby Tuckett, Helen Laveck, Dorothy Magee, Beryl Cousins

Drawing

Map of Canada - E. Fitchett, Stewart Loyst, Irene Ruttan, Harold Allison, Ruth Campbell, Florence Morrow

Watercolor Poster - George Day, Dorothy Sills, George Scott, Gladys Lloyd, Ruth Hudgins, Ward Allison

Drawing of Cat - Anna Sills, Peggy Heathcote, Jack Roblin, Mary Loyst, Morley Peters, E. Magee

Drawing of Pumpkin - Francis Allison, Margaret Allen, Patricia Sills, Evelyn Ackerman, Edna Ruttan, Gladys Kilgannon

Contests

Stock Judging Contest - Ralph Fretts, Ralph Schell, Dave Reid, Jimmie Mack

Stock Naming Contest - Arthur Whitfield, Edna Cranston, Dave Reid, Bertie Rombough, Kathleen Laveck

Vegetable Judging Contest - Dena Cranston, Betty Heathcote, Donald Hough, Bernice Laveck, Bertie Rombough, Arthur Whitfield

Public Speaking Contest - Betty Heathcote, Ruth Hudson, Fred Brooks, Kathleen Laveck

School Chorus – S.S. #4 [Parma], S.S. #3 Ad. [Third Concession], S.S. #2 Ad. [Dorland], S.S. #2 S.F. [Sandhurst]

Strathcona Exercises – S.S. #4 S.F. [Parma], S.S. #3 Ad. [Third Concession]

From the Kitchen

Jane Lovell

It seemed appropriate to feature a coffee cake to compliment the articles in this issue about Daly coffee. A search for such a recipe lead to *A Taste of Adolphustown*, a community recipe book published in 1983 as part of the fundraising efforts for 1984 bicentennial commemorations of the landing of the United Empire Loyalists at Adolphustown. Containing over 400 recipes contributed by dozens of women and several men and children of the community, the collection also included short history notes and baking tips along with recipes and remedies from the 1881 *Canadian Cook Book* and other pioneer cookbooks. Scenes illustrating the history of Adolphustown, sketched by Ruth Brooks and Shirley Miller, also grace the book.

Most contributors were identified as, say, "Grace Daverne (Mrs. Richard)". Incidentally, Grace's *Date and Nut Loaf*, our inaugural recipe in this column, did not make it into the cookbook. Grace submitted several recipes, as did her mother-in-law "Elva Daverne (Mrs. George)", and her daughter-in-law "Jutta Daverne (Mrs. Gerald)".

Several recipes were attributed to "Amelia Allison (Mrs. David W.)". Amelia, née Membery, was a lifelong resident of Adolphustown. Her husband, David Wright Allison, represented the county federally for several years and was a successful farmer and businessman. In 1876, the Allison family built the house currently used as a museum and research centre in the UEL Park. Amelia lived there until her death in 1940.

Scotch Cake

Cream together:

- $\frac{3}{4}$ cup butter
- 1 cup sugar

Beat in:

- 4 eggs
- zest and juice of half a lemon
- $\frac{1}{4}$ cup whiskey

Sift in:

- $1\frac{1}{2}$ cup flour

Add:

- $1\frac{1}{2}$ cup raisins

Pour into in a greased loaf pan and
bake at 300°F for 1 $\frac{1}{2}$ hours.

Makes 1 loaf.

In addition to recipes for dandelion wine and two other cake recipes, Amelia's recipe for *Scotch Cake* appears in the cookbook. Unfortunately, a transcription error meant that the eggs mentioned in the instructions were missing from the ingredient list. Also, because this is an old recipe, no oven temperature was given.

SCOTCH CAKE

1 lb. white sugar	$\frac{3}{4}$ lb. butter
1 lb. flour	1 lb. raisins
juice and rind of 1 lemon	$\frac{1}{2}$ c. whiskey

Cream butter and sugar. Add eggs, lemon juice, whiskey and raisins. Cook slowly for $1\frac{1}{2}$ hours.

AMELIA ALLISON (MRS. DAVID W.)

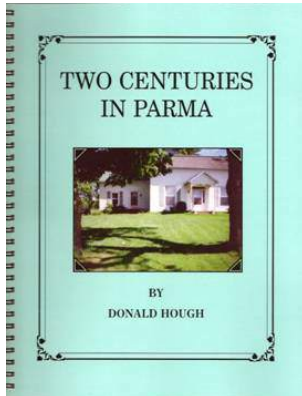


In the 2021 version of Amelia's Scotch Cake
I used currants instead of raisins.
The result: Tangy, moist, and rich!

Some sleuthing into basic cake science revealed that this cake is likely a version of a pound cake. "Pound" in "pound cake" does not indicate the final weight of the cake, but rather the weight of all four base ingredients (butter, sugar, flour, and eggs). And the number of large eggs in a pound of eggs? Seven and a half! The recipe reproduced here halves the quantities in Amelia's recipe and lists ingredients by volume instead of by weight. The modern result gives a hint of why the original, baked in kitchen of Allison House a century ago, was selected in 1983 to accompany other family favourites from throughout Adolphustown township.

If you have a recipe you are willing to share please send it to jane.lovell@kos.net.

From the Book Shelf



Two Centuries in Parma Donald Hough

TWO CENTURIES IN PARMA covers the ownership of the lots on Concession 2, Additional, from the Crown Grant to the owner as of 2004, and includes genealogical information and history on the families who live there. Names include Haight, Brooks, Mallory, Allison, Young, Wagar, Ruttan, Lloyd, Powell, Garrison, Grooms, Stratton, White, Box and many, many more. The book has 101 pages, 2 maps and 41 pictures.

The Society periodically publishes books reflecting our local history. Our catalogue now contains fifteen titles.

See our website (<http://www.sfredheritage.on.ca/Books.htm>) for a full list, along with a brief description of each book.

A Curious Thing

Angela Cronk



April's Curious Thing

This is a cookie dough press. The end of the metal cylinder has a cutout through which the dough is pressed. The shape of the cutout determines the shape of the cookie. This is what mine looks like.



What is this?



Submitted by Angela Cronk

This thing is about 18" high.

Please contact angelacronk@gmail.com if you recognize the item. Tell us what it is called, what it is used for, during what era it was used, and anything else known about it.

Do you have some weird thing hanging around your home or barn? Take a photo of it and send it in – we can feature it here in a future issue.

From the Attic

We are looking for old photos and documents from Adolphustown, North and South Fredericksburgh. Just about any old photograph would be of interest: photos of people, homes, farms, schools, churches, or community or family events. Even if you do not know the people or places in the photos, maybe someone else in the community does. Old publications relating to township businesses, schools and churches often contain fascinating details of life in their era.

Some items we are currently looking for:

OLD PHOTOS or Real Photo POSTCARDS:

- The Adolphustown Town Hall
- The South Fredericksburgh Town Hall at Sillsville
- The U.E.L. Cheese Factory, Adolphustown
- St. Paul's Church, Main Street Adolphustown
- The Old Store at Adolphustown
- The Old Hotel at Adolphustown
- Conway Store
- Conway Wharf
- Phippen Cheese Factory
- Fredericksburgh Train Station
- McDowall Presbyterian Church
- Camp Le Nid
- Glen Island
- Tarry Hall

CORRESPONDENCE:

- Letters or postcards bearing postmarks from local towns and villages
- Correspondence from someone serving overseas during either WWI or WWII

BOOKLET:

- Constitution and Roll of Officers and Members of Camp Le Nid, 1902

If you are looking for any specific photos or documents, let us know and we will add it to our "Attic" list. **Newly added items will be highlighted in blue!**

Contribute to *The Neighbourhood Messenger*

We publish *The Neighbourhood Messenger* several times a year. If you have an old photograph or newspaper clipping to share, a story to tell, or an event to publicize, let us know. Please send submissions to jane.lovell@kos.net.

Contributors to this issue:

Angela Cronk
Jane Lovell
Steve Medd
Susan Wright